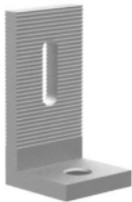


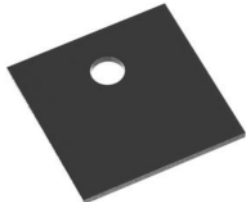






Roof Anchor Installation Guide



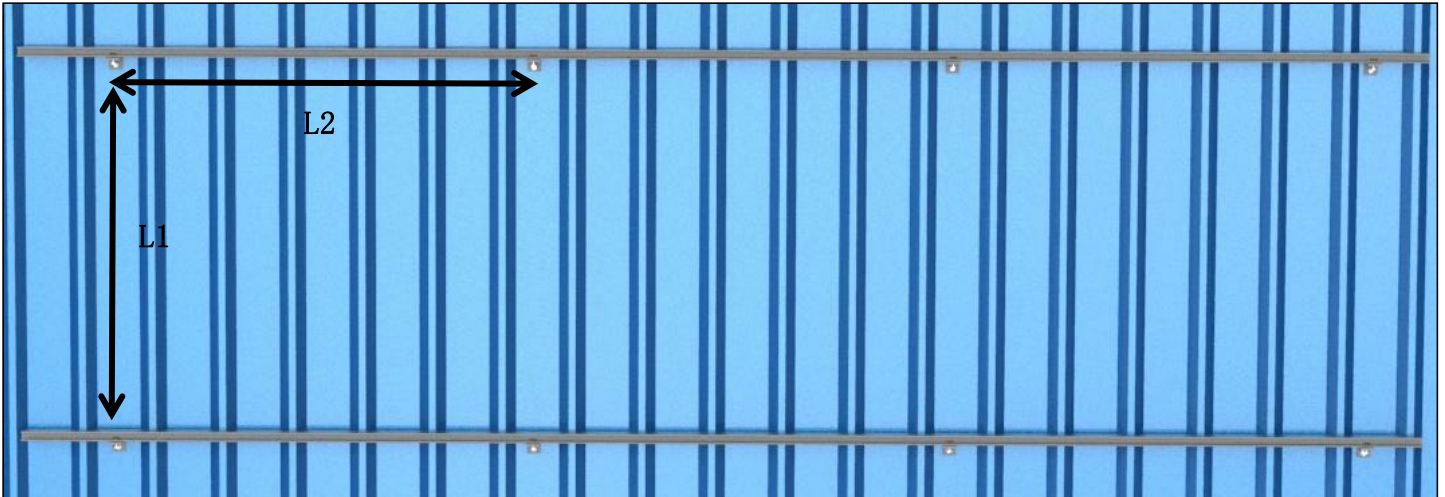
Components List:

Model name	Roof Anchor	Screw & Clamp	Tapping Screw	Rubber
Picture				

Model name	Rail	Splice	End Clamp	Inter Clamp
Picture				

Installation Steps:

Determine the position of the roof anchor according to your design.

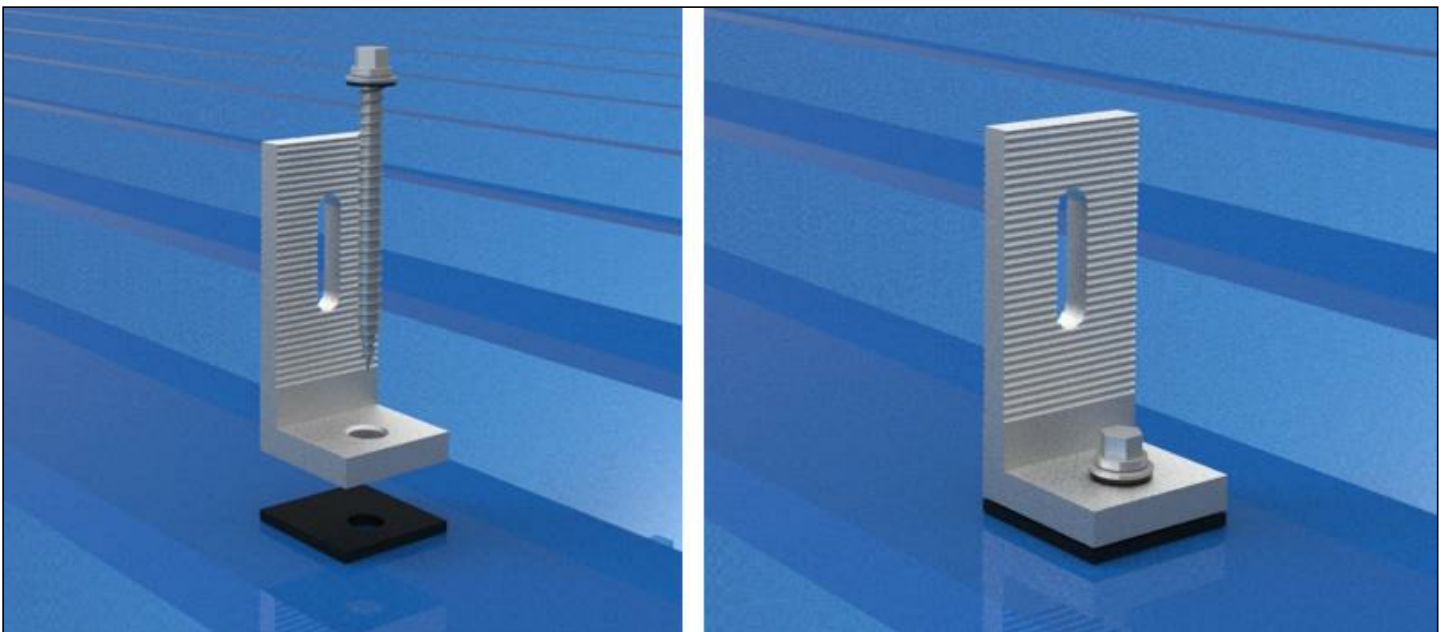


L1: Distance between rails is $0.6 * \text{panel length}$.

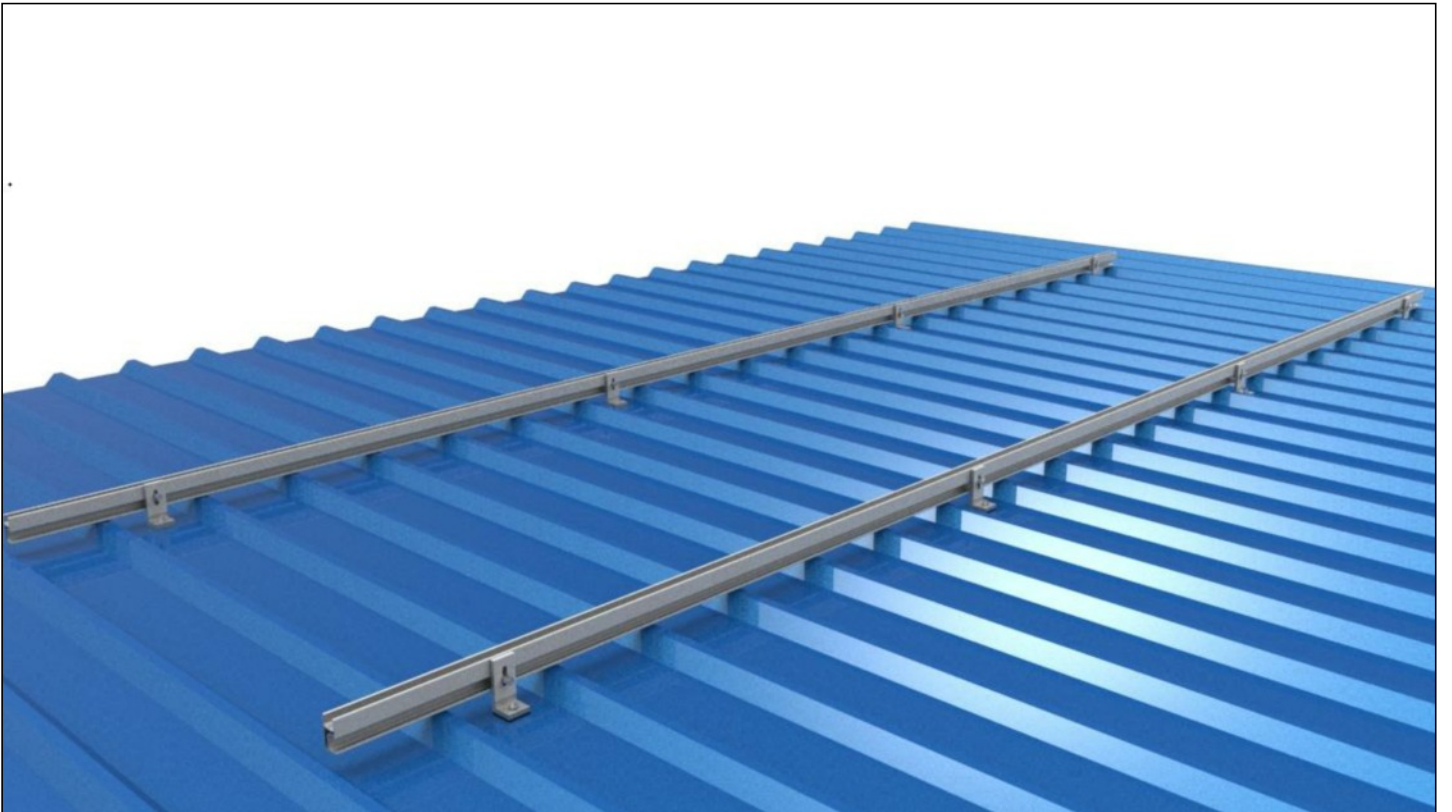
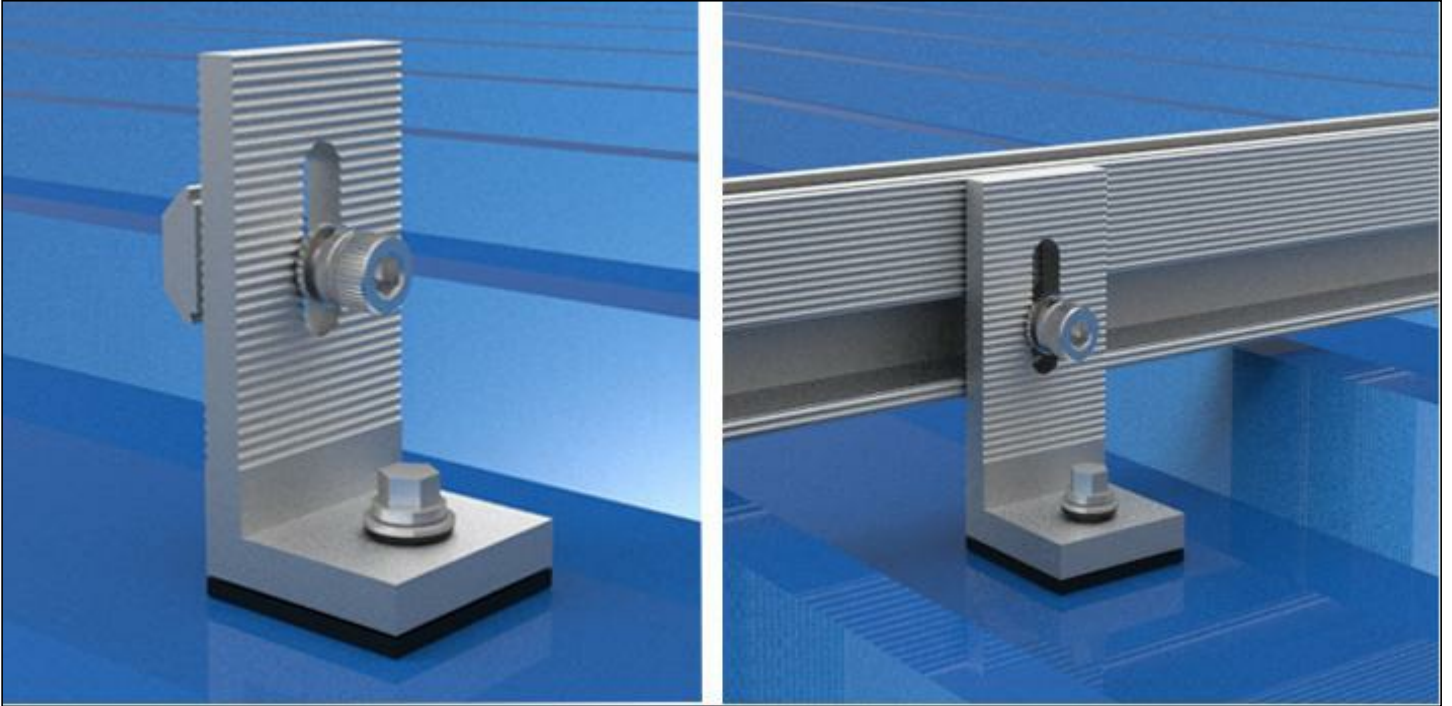
L2: Distance between roof anchor = 1200mm.

1. Install the roof anchor to the roof.

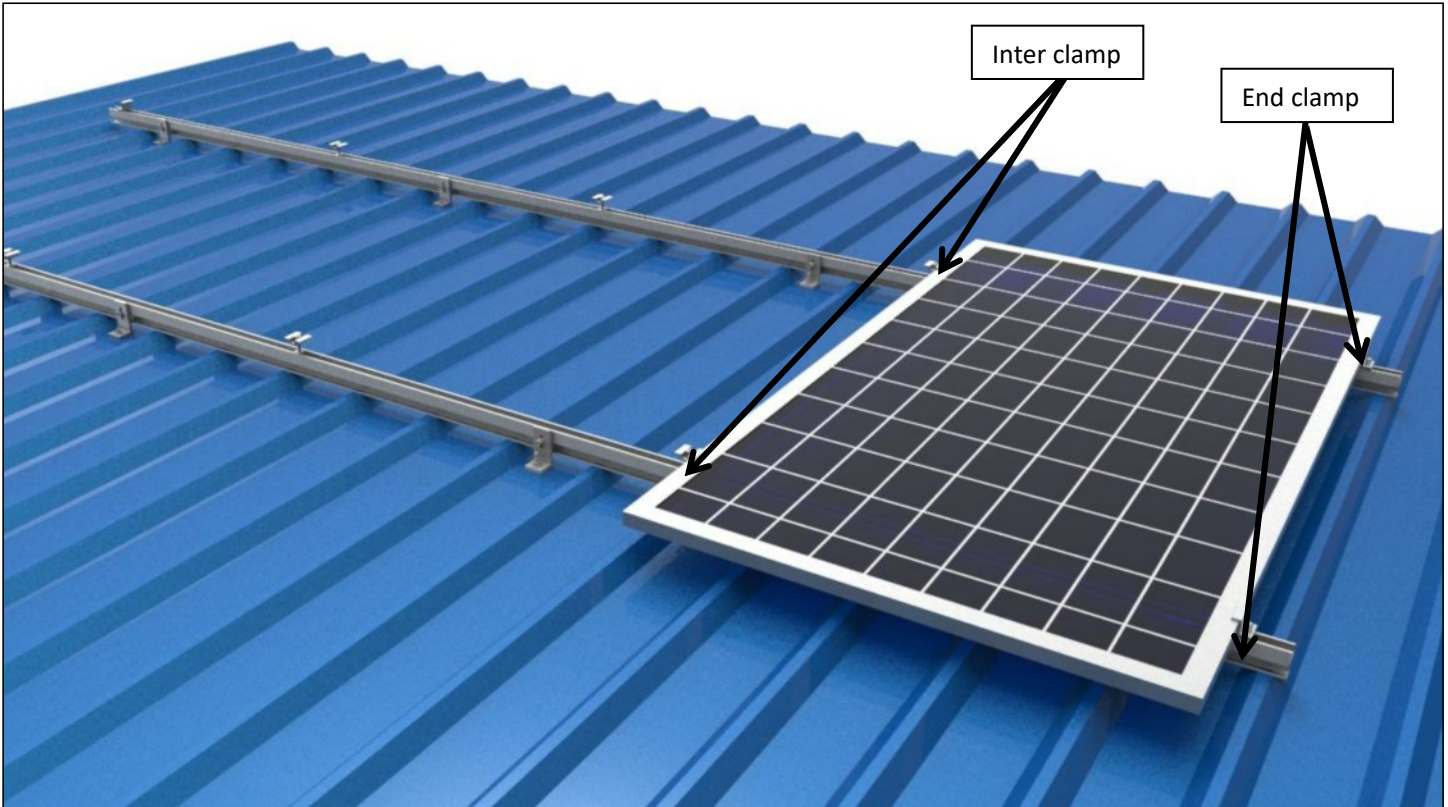
Fix the roof anchor with self tapping screw and waterproof rubber seal.



2. Install the rail on the roof anchor with the bolt and nut.



3. Place the first solar panel of the bottom row. Slide the end clamp tightly against the solar panel and fasten it. Fix the solar panel with the end clamps and Inter clamps.



4. Finished.

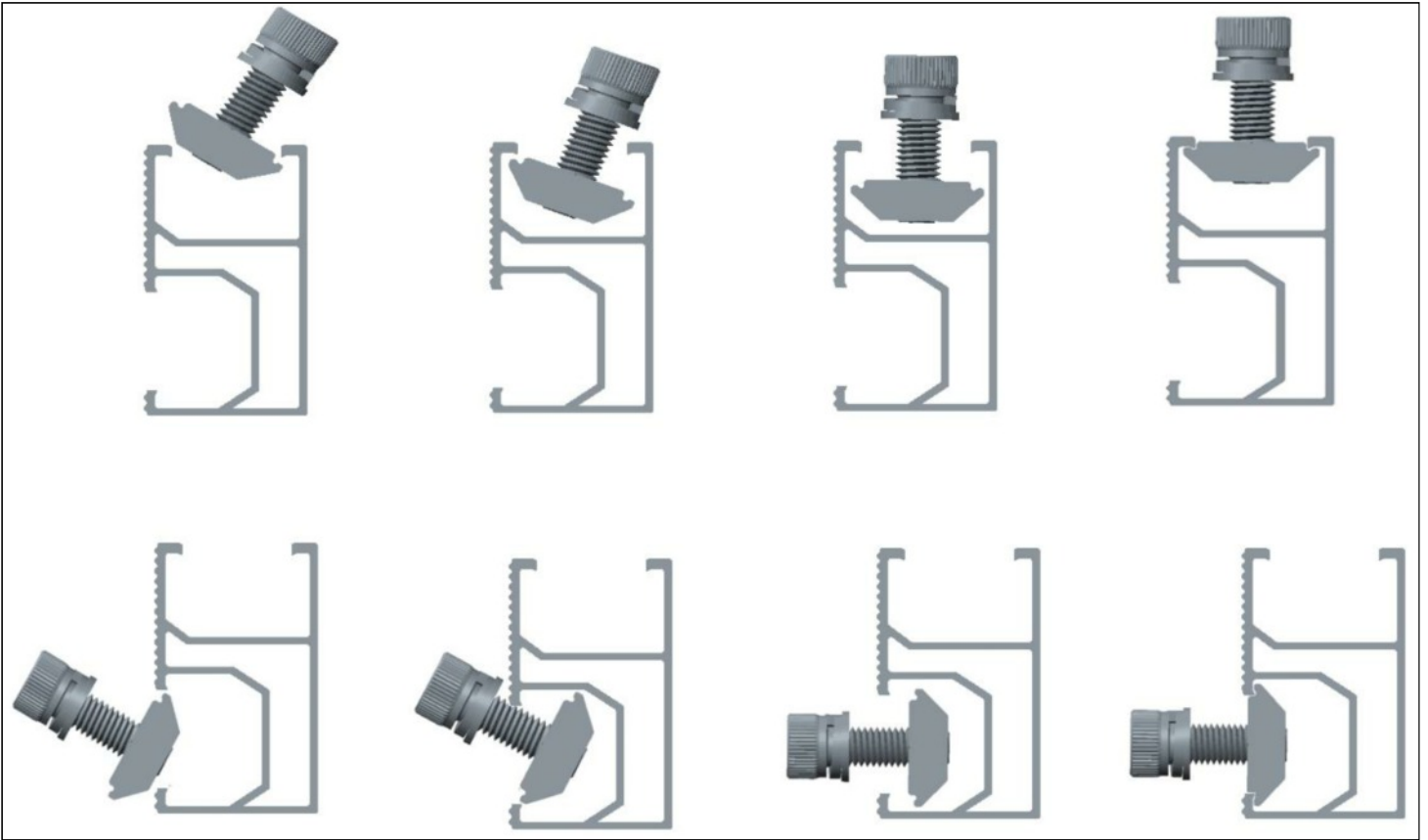


Tip:

Leave a little gap between the two rails.
When installing two rails with the rail splice rail kit, an expansion gap at the rail joints is suggested.



Installation of nut:



Registered office:

Sunshine Solar Limited
Unit 30, Ashwellthorpe Industrial Estate
Ashwellthorpe
Norwich
Norfolk
NR16 1ER

tel. +44 (0)1508 488188

email. support@sunshinesolar.co.uk

web. www.sunshinesolar.co.uk